

DCH - HM6HBM1

MONOCRYSTALLINE PERC
HALF-CELL MODULE

DCH-HM6HBM1 - 445

144 CELL

Mono PERC HC Module 9BB

445 Wp

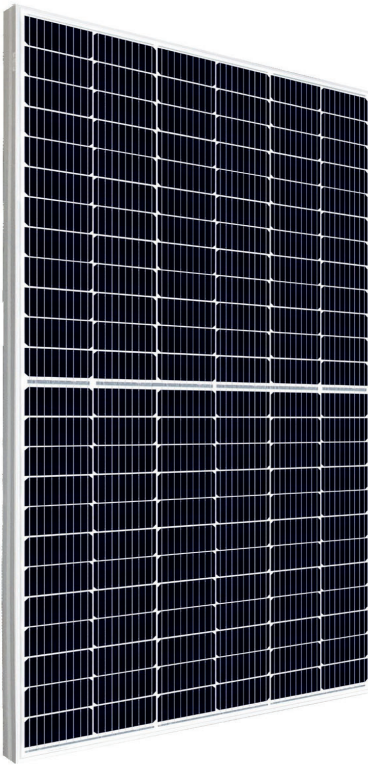
Power Output Range

20.47%

Efficiency

0 / +5 W

Positive Power Tolerance



DCH Energy GmbH

DCH Energy since its establishment in Germany has achieved a recognizable position as photovoltaic technology and solution provider through a number of investments in Germany. Both the components and engineering used by DCH Energy are recognized worldwide. In the development of the projects, not only the construction management and operation are performed according to international standards. The DKB bank, the largest financing institute in Germany has also financially approved DCH Energy Products and technology for a number of projects. DCH Energy also owns solar assets in Europe, Asia and Africa. We have a global presence with more than 400 MWp of fully operational PV projects, including both ground mounted and rooftop solar projects. Our capabilities span the full PV supply chain, from ingot-wafer-cell-module production to turnkey installation and financing.

In der Wehbach 17, 57080 Siegen, Germany
Tel: +49 271 3878100 Fax: +49 271 38781022
E-mail: info@dch-group.de Website: www.dch-group.de



Key Features



High performance in low irradiance conditions



Innovative World-Class quality products and high reliability due to stringent quality control and following international standards



Price Competitiveness in all project ranges



12 years product warranty



Suitable for harsh environments, such as coasts, deserts and lakes



PID resistant and free of snails trails

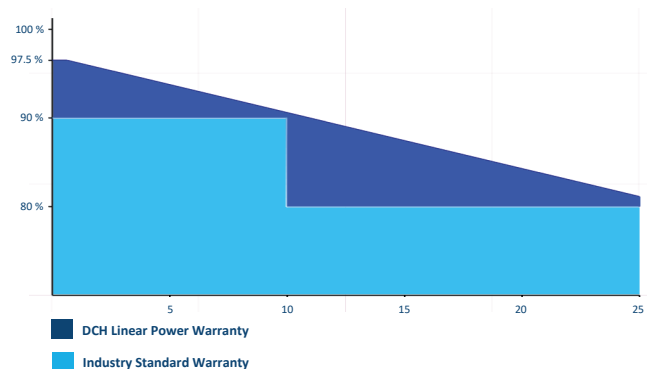


Comprehensive Certificates

- IEC61215, IEC61730-1/2, IEC61701, IEC62716, IEC60068-2-68
- ISO 9001: 2015 Quality management systems
- ISO 14001: 2015 Environmental management systems
- OHSAS18001: 2011 Occupational health and safety management systems

LINEAR PERFORMANCE WARRANTY

12 Year Product Warranty / 25 Year Linear Performance Warranty



ELECTRICAL DATA (STC)

Model Number	DCH-HM6HBM1 - 445
Nominal Power	445 Wp
Voltage at max. power Vmpp	41.32 V
Current at max. power Impp	10.77 A
Open circuit voltage Voc	49.04 V
Short circuit current Isc	11.55 A
Efficiency	20.47 %

Data applies to Standard Test Conditions (STC): Irradiance 1000W/m² with an AM of 1.5 and a cell temperature of 25°C

ELECTRICAL DATA (NMOT)

Model Number	DCH-HM6HBM1 - 445
Nominal Power	333.96 Wp
Voltage at max. power Vmpp	38.52 V
Current at max. power Impp	8.67 A
Open circuit voltage Voc	46.49 V
Short circuit current Isc	9.37 A

NMOT: Irradiance 800 W/m², Ambient Temperature 20°C, Wind Speed 1 m/s.

MECHANICAL DATA

Solar Cells	Mono PERC, Half 166 x 83 mm
Cells per module	144 Cells (6*12*2 matrix)
Dimensions (tolerance +/- 1 mm)	2094 mm x 1038 mm x 35 mm
Weight	24.5 kg
Laminat/Glas	3,2 mm Tempered Coated
Frame	35 mm, silver anodized Al alloy
Back side colouring	White
Max. Wind load	2400 Pa
Snow load	5400 Pa
Junction Box	Protection type: IP67 with spring-cage term

TEMPERATURE & MAXIMUM RATINGS

Nominal power tolerance	0~+5%
Temperature Coefficient Pm%/ °C	-0.347 %/°C
Temperature Coefficient Voc%/°C	-0.263 %/°C
Temperature Coefficient Isc%/°C	0.057 %/°C
Maximum System Voltage	1500 VDC
Operating temperature range	-40 ~ +85°C
Maximum series fuse rating	20 A

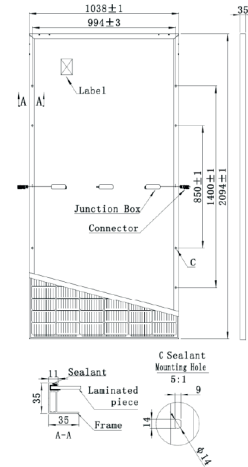
WARRANTY

12 years Product Warranty
25 years Performance Warranty

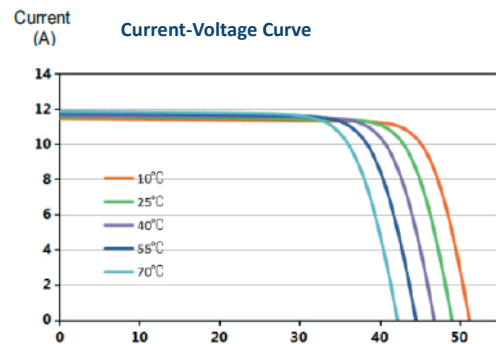
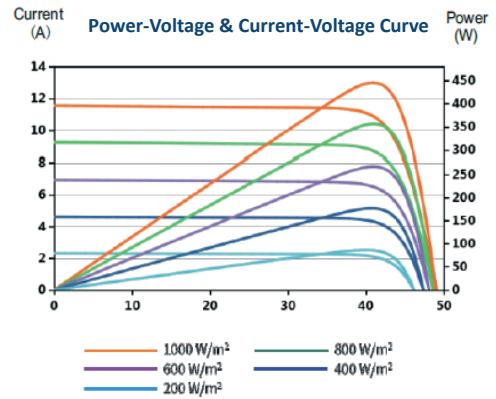
PACKAGING

31pcs/pallet 682pcs/ 40'HQ

DRAWINGS & DIMENSIONS



I-V CURVE CHARACTERISTICS



In der Wehbach 17, 57080 Siegen, Germany
Tel: +49 271 3878100 Fax: +49 271 38781022

